



BOSCH

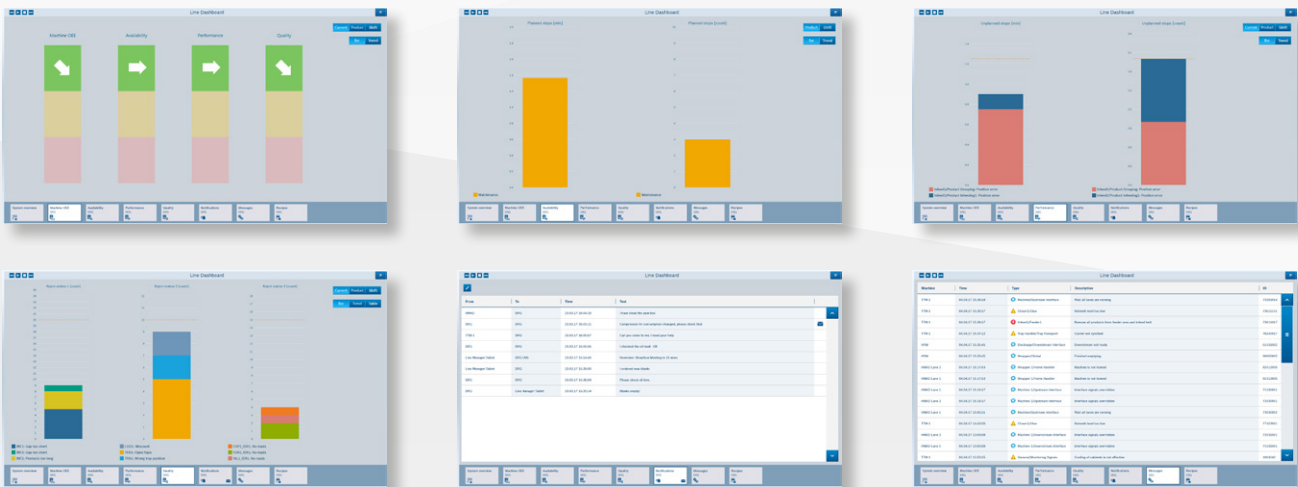
Invented for life

Real-time status and KPI drilldown with HMI 4.0 Line Dashboard

Process safety on a new level



A clear overview of system or machine status



Line Dashboard

The HMI 4.0 Line Dashboard¹ provides users with a clear system overview as well as an easy drilldown to single machines. For each machine, real-time status and KPIs with trends can be checked by pre-defined reports (e.g. alarms, stops, and rejects). The KPIs (machine OEE) are indicated according to DIN 8743. Users can also notify the HMIs of immediate, recommended actions or save information for the shift handover.

Application and Key Benefits

A transparent system overview, KPIs trends and line status visualization enable to set proactive countermeasures and improve efficiency. Moreover, wherever you are, the Line Dashboard is accessible from the HMI 4.0, a tablet, Shopfloor Dashboard, or a PC in the network.

Customer Value

- ▶ Prevents unplanned downtime by real-time status and trend indication
- ▶ Issue warnings
- ▶ Reduces or eliminates walking time to machines
- ▶ Minimizes information gaps in shift handover
- ▶ Quick support of users at connected machines

Combine with

- ▶ Maintenance Support System²
- ▶ Shopfloor Dashboard²
- ▶ Remote Service with Shopfloor Remote Assistant²
- ▶ Modernization

1 Software: needs hardware for usage

2 Shopfloor application ("App")

**Robert Bosch
Packaging Technology GmbH**

Stuttgarter Straße 130, 71332 Waiblingen, Germany

i40.packaging@bosch.com | www.boschpackaging.com