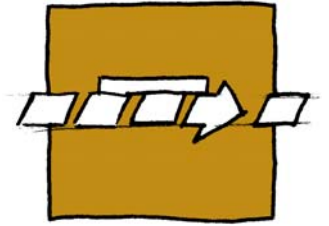


Gentle and ongoing



TRANSVER Driven side guide

Z-MK / Z-MT

Description of function

The TRANSVER Driven side guide line is highly versatile and designed specifically for TRANSVER conveyor systems. TRANSVER Plus Driven side guides are selected according to functional requirements and optimally adapted to your product. This ensures ideal product handling according to individual needs.

Driven side guide, V-belt type, type Z-MK

Thanks to the straight outlet section, this V-belt system is ideal for separating small products. A swivelling device also enables product rejection.

Driven side guide, conveyor belt type, type Z-MT

The conveyor belt system has flexible mountings which even allow adjustment of the attitude angle (β). This enables optimal guidance of a wide range of products.

Areas of application

Can be used in both the food and non-food industries. Examples include:

- Separation
- Frictionless guidance
- Alignment
- Splicing
- Rejection

Technical Data

Belt speed	
type Z-MK	<i>up to 90 m/min</i>
type Z-MT	<i>up to 120 m/min</i>
Belt width	
type Z-MK	<i>10 mm</i>
type Z-MT	<i>50 mm</i>
Noise level	<i>depending on dimensions</i>

Performance data may vary according to application

Specifications

Driven side guide, V-belt type, type Z-MK

The FDA polyurethane V-belt is driven by a geared motor, and can be replaced in 10 minutes.

Driven side guide, conveyor belt type, type Z-MT

The FDA polyurethane transport belt is driven by a geared motor.

The belt is self-centering and can be replaced in 10 minutes.

Supports

Cramped on mounting bars

Safety

CE manufacturer declaration

Finish

- Mild steel, choice of RAL shade
- Complete stainless steel on request

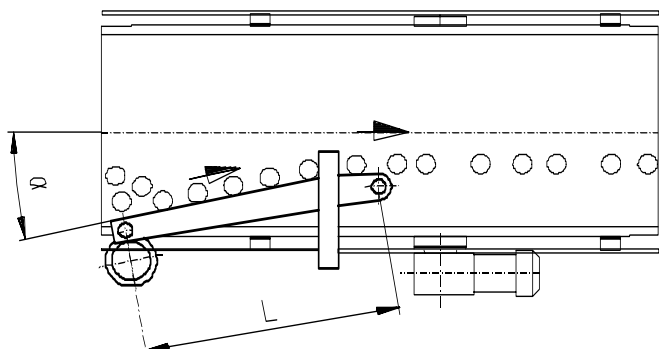
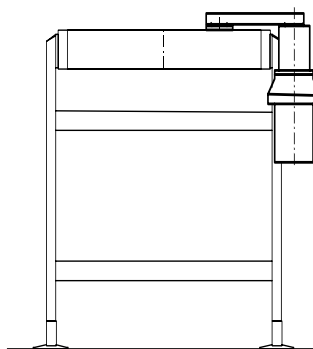
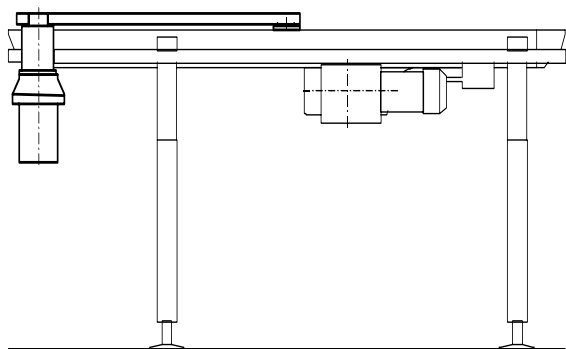
Options

- Swivel device (Z-MK)

Your benefits

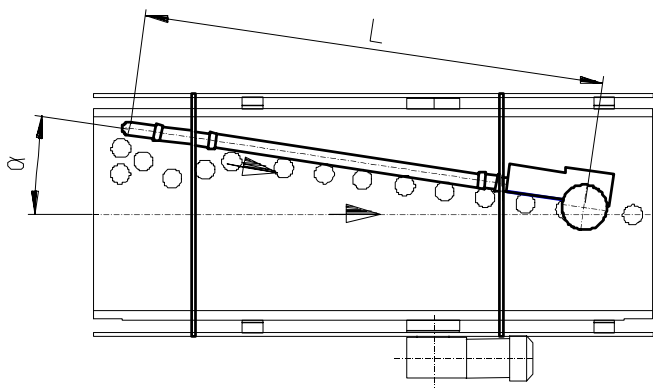
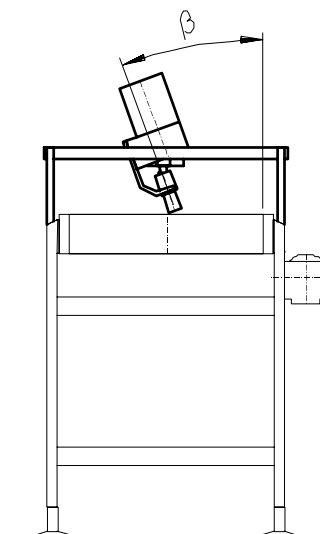
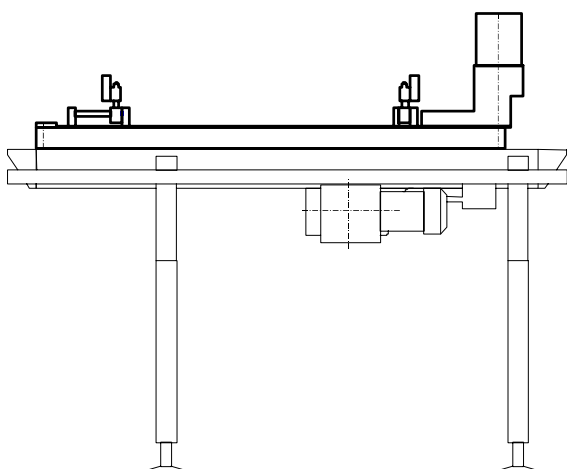
- Frictionless product guidance
- High belt speed
- Efficient separation
- Gentle product handling
- Very versatile
- Easy to clean
- Fast and easy belt changing
- Combinable with all TRANSVER conveyor systems
- Sturdy design has a proven record in multi-shift operation

Driven side guide, V-belt type (Z-MK)



Length L 800, 1000, 1300 mm
 Guide angle α Adjustable
 Other dimensions on request

Driven side guide, conveyor belt type (Z-MT)



Length L 1475 mm
 Guide angle α adjustable
 Crossing angle β $\pm 20^\circ$
 Other dimensions on request