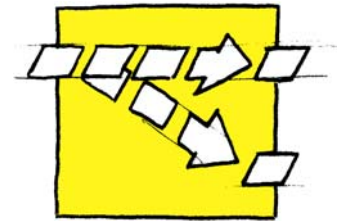


High productivity for low prices



TRANSVER Tilting Conveyor, crank gear type

WK

Description of function

The TRANSVER Tilting Conveyor impresses by his modular design and is offered in two standard versions. The self-contained tilting unit type WK-F distinguish with a special infeed section and a discharge section, which can be swivelled. The type WK-S consists only of a swivelled discharge section, which can build on a TRANSVER TC Straight Conveyor. This permits that an existing straight conveyor can be modified in a tilting unit.

An efficient crank drive guaranties a short switching time. This allows that the products can be distributed accurately to two conveying levels. Targeted sorting of products is possible. Thanks to a special developed control unit also a low-priced solution for automated accumulator charging exists. (standard with Allen Bradley / other control unit products on request)

Areas of application

Can be used for a variety of purposes in both the food and non-food industries. Examples include:

- Vertical distribution
- Line duplication
- Product dumping
- Accumulator charging
- Cross distribution

Technical data

Switching time (stroke 40mm)*	<i>min. 200 ms</i>
Horizontal levels	<i>2 or more</i>
Belt speed	<i>up to 90 m/min</i>
Conveyor load	<i>up to 10 kg/m²</i>
Noise level	<i>depending on dimensions</i>

*Performance data depend on stroke as well as on condition and dimension of the products.

Specifications

Belt drive

The geared motor and the rubberised drive roller are secured on the belt tensioning station as the drive unit. This station allows the conveyor belt to be tensioned centrally without changing the length of the belt.

Lifting drive

A motor is used to power the tilting end by a crank drive.

Conveyor belt

- Coated 1- or 2-layer polyester fabric
- Endless welded
- Compatible with foodstuffs (FDA)
- Changing a belt requires approximately 10 -20 minutes (excluding built-on components)

Belt tracking unit

The belt tracking unit ensures perfect alignment and increases it's life time.

Supports

With supports for floor mounting (adjustable ± 30 mm)

Safety

CE manufacturer declaration

Finish

- Mild steel, choice of RAL shade
- Stainless steel (V2A) as an option

Your benefits

- Favourable price-performance ratio:
 - Low-priced drive concept and modular design
 - An integration in a TC Straight Conveyor possible
 - High row capacity
 - Low maintenance charges
 - Small space required because of compact design
- High productivity:
 - High availability because of sturdy design, proved for multishift operation
 - Low maintenance requested
- Handling of small, fragile products thanks to end rollers with 14 mm diameter
- High hygiene standards because of:
 - Downward opened chassis design
 - Good accessibility

Mechanical options

- Belt scraper
- Catch tray
- Knife edge radius 3 mm
- Conveyor connections
- Guides *
- Driven side guides *
- Alignment bar *
- Trunking
- Safety guard
- Further options on request

* See separate leaflet

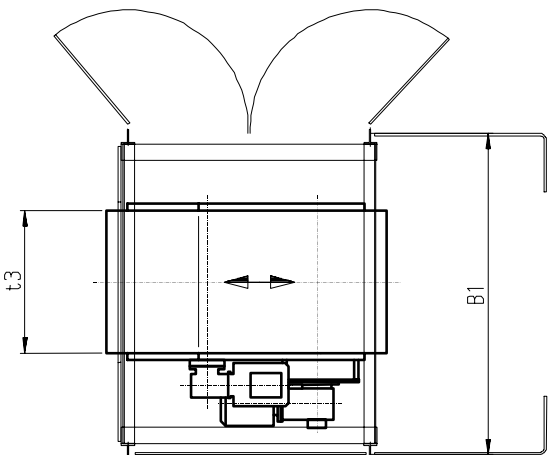
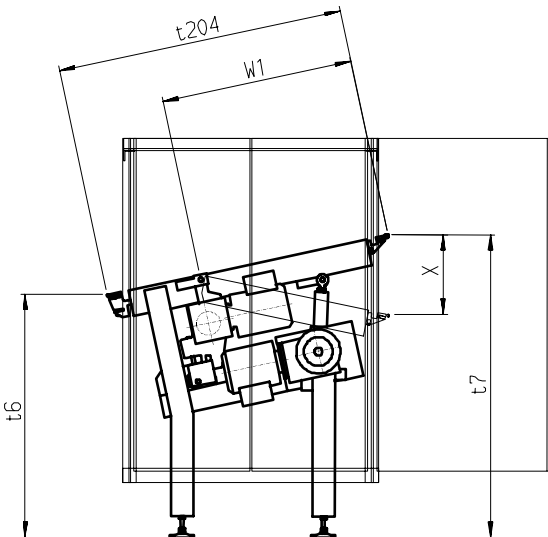
Electrical Options

- End limit control
- Disconnecter
- Metal detector
- Detector for product position
- Detector for product dimensions
- Increment transmitter
- Emergency stop
- Further options on request

Dimensions [mm]

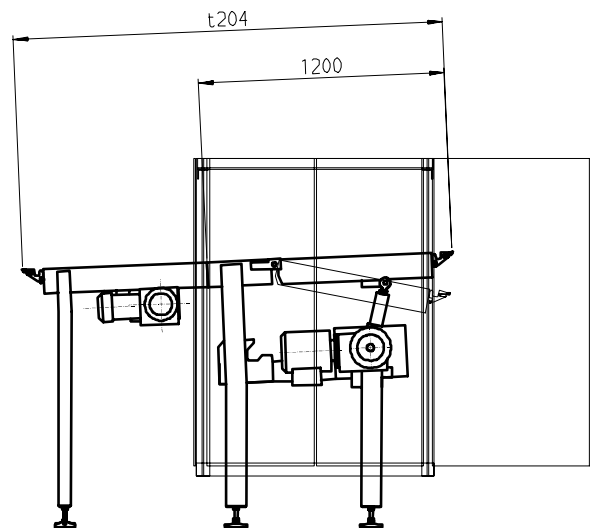
WK-F type

Tilting as a autonome unit



WK-S typeL

Tilting as a build-on-unit to TC straight conveyor



Conveyor length t204 WK-F type	1300 mm (with pneumatic belt traking unit) 1500 mm (with mechanical belt traking unit)
Conveyor length t204 WK-S type (incl. TC)	2100 to 20'000 mm
Belt width t3	100 to 1600 mm in steps of 50 mm
Total width B1	t3 + 810 mm
Infeed height t6	850 to 1100 mm
Discharge height t7	850 to 1100 mm (with assembly angle 0°)
Assembly angle	max. 12°
Tilting end length W1	870 mm
Stroke X	40 to 360 mm

Dimensions out of our standard are available as a special construction.