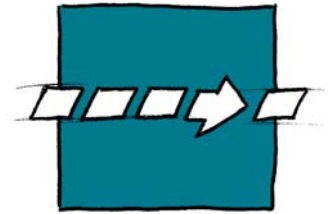


Short and flush



TRANSVER Straight conveyor, short type

TB

Description of function

The TRANSVER Straight Conveyor has a modular structure and is assembled according to your individual requirements. Whether you choose the ceiling suspension or the special head assembly, all components are coordinated with one another to ensure easy servicing and reliability. End rollers with a diameter of 14 mm gently convey even the smallest products over the belt transition points.

This short straight conveyor was developed for use in extremely restricted conditions, and for accelerating individual products to form batches. Even the widest belt of 1400 mm operates reliably with perfect alignment.

Areas of application

Can be used for a variety of purposes in both the food and non-food industries to provide reliable transportation.

Examples include:

- Chocolate, biscuits, confectionery
- Other Food industries
- Beverages (such as bottles, cans)
- Frozen food
- Washing products/detergent industry
- Chemicals/pharmaceuticals/cosmetics
- Mechanical industry

Technical data

Belt speed	<i>up to 90 m/min</i>
Conveyor load	<i>up to 15 kg/m²</i>
Noise level	<i>depending on dimensions</i>

Performance data may vary according to application

Specifications

Belt drive

The geared motor and the rubberised drive roller are secured on the belt tensioning station as the drive unit. This station allows the conveyor belt to be tensioned centrally without changing the length of the belt.

Conveyor belt

- Coated 1- or 2-layer polyester fabric
- Endless welded
- Compatible with foodstuffs (FDA)
- Changing a belt requires approximately 20 minutes (excluding built-on components).

Belt tracking unit

The belt tracking unit ensures perfect alignment and optimal service life.

Supports

With supports for floor mounting

- Fixed (adjustable ± 30 mm)
- Mobile (on castors)

Ceiling suspension

Safety

CE manufacturer declaration

Finish

- Mild steel, choice of RAL shade
- Stainless steel on request

Your benefits

- Favourable price-performance ratio:
 - Extremely short design
 - Fast installation and commissioning
 - Low maintenance charges
- High productivity:
 - High reliability because of sturdy design, proved for multishift operation
 - Belt runs precisely on track
 - Low maintenance requested
- Handling of small, fragile products:
 - Belt conveyor transition points are minimised thanks to end rollers with 14 mm diameter
 - Adjustable end roller units

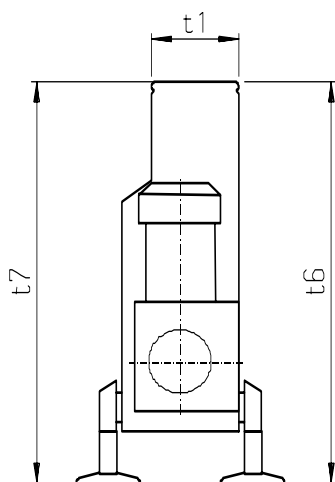
Mechanical options

- Belt scraper
- Catch tray
- Knife edge, radius 3 mm
- Ceiling suspension
- Conveyor connections
- Vakuum type
- Additional safety guard
- Guides *
- Alignment bar *
- Trunking
- Further options on request
- *See separate leaflet*

Electrical Options

- Servo motor for belt drive
- Disconnecter
- Increment transmitter
- Emergency stop
- Further options on request

Dimensions [mm]



Conveyor length t_1	150, 220, 250 and 300 mm
Belt width t_3	500 to 1600 mm in steps of 50 mm
Total width B_1	$t_3 + 82$ mm
Infeed height t_6	690 to 1500 mm
Discharge height t_7	690 to 1500 mm
Other dimensions	on request

