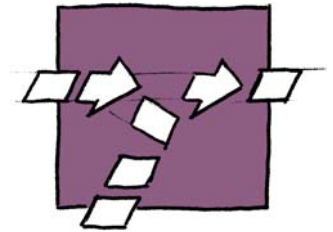


Efficient and simple



TRANSVER Pullnose conveyor, pneumatic type

PP

Description of function

The TRANSVER Pullnose conveyor consists of an infeed section and a discharge section which can be retracted in the belt plane. The belt tension remains constant in every position. End rollers with a diameter of 14 mm gently convey even the smallest products over the belt transition points.

The Pullnose conveyor with pneumatic drive offers a simple and efficient solution for dumping products.

Areas of application

Can be used for a variety of purposes in both the food and non-food industries as cross distribution or product rejecting. Examples include:

- Chocolate, biscuits, confectionery
- Foodstuff
- Frozen food
- Washing products/detergent industry
- Chemicals/pharmaceuticals/cosmetics

Technical data

Take-up speed	up to 30 m/min
Horizontal levels	2
Belt speed	up to 60 m/min
Conveyor load	up to 8 kg/m ²
Noise level	depending on dimensions

Performance data may vary according to application

Specifications

Belt drive

The geared motor and the rubberised drive roller are secured on the belt tensioning station as the drive unit. This station allows the conveyor belt to be tensioned centrally without changing the length of the belt.

Lifting drive

A pneumatic cylinder drives the slide which is guided by slide blocks.

Conveyor belt

- Coated 1- or 2-layer polyester fabric
- Endless welded
- Compatible with foodstuffs (FDA)
- Changing a belt requires approximately 30 minutes (excluding built-on components).

Belt tracking unit

The belt tracking unit ensures perfect alignment and optimal service life.

Supports

With supports for floor mounting

- Fixed (adjustable ± 30 mm)
- Mobile (on castors)

Safety

CE manufacturers declaration

Finish

- Mild steel, choice of RAL shade
- Stainless steel

Your benefits

- Favourable price-performance ratio:
 - Modular design allows easy adaptation to customer needs
 - Cost efficient solution for product rejecting
 - Fast installation and commissioning
 - Low maintenance costs
- High productivity:
 - High availability due to sturdy design, proven in multishift operation
 - Low maintenance requirement
- Safe and gentle handling of small, fragile products:
 - Adjustable endroller units
 - Minimal belt transition points with $\varnothing 14$ mm end rollers or knife edges
 - Accurate belt tracking
- High hygiene standards:
 - Downwards open chassis design
 - Good accessibility

Mechanical options

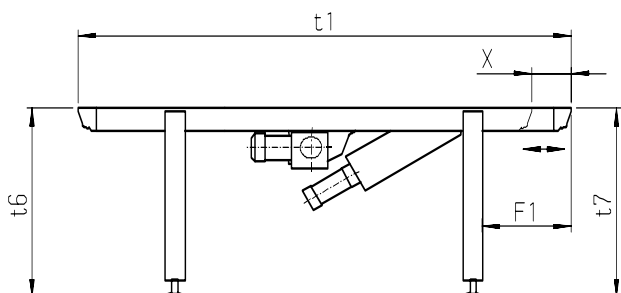
- Belt scraper
- Catch tray
- Knife edge radius 3 mm
- Conveyor connections
- Additional safety guard
- Guides *
- Driven side guides *
- Alignment bar *
- Trunking
- Further options on request

* See separate leaflet

Electrical Options

- Servo motor for belt drive
- End limit control
- Metal detector
- Disconnecter
- Detector for product position
- Detector for product dimensions
- Increment transmitter
- Emergency stop
- Further options on request

Dimensions [mm]



Conveyor length t1	<i>min. 1600 mm</i>
Belt width t3	<i>200 to 1600 mm in steps of 50 mm</i>
Total width B1	
t3, 200 to 1050 mm	<i>t3 + 246 mm</i>
t3, 1100 to 1600 mm	<i>t3 + 294 mm</i>
Infeed height t6	<i>600 to 1500 mm</i>
Discharge height t7	<i>600 to 1500 mm</i>
Assembly angle	<i>Standard: horizontal, up to 12°</i>
Stroke X	<i>150, 200 or 250 mm</i>
Other dimensions on request	

