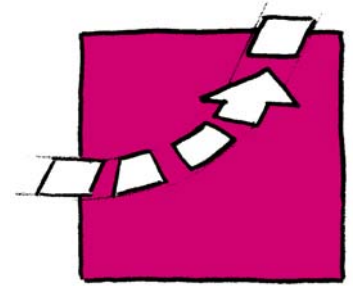


The versatile belt bend for a wide range of applications



TRANSVER Belt Bend

KA

Description of function

The TRANSVER belt bend type KA is available in many different versions and with many options and is therefore very suitable for a wide range of applications in the food- as well as in the non-food industry. With belt widths from 200 to 1800 mm, a minimum inner radius of just 230 mm and a frame height of 114 mm only, this belt bend can be perfectly adapted to all critical space situations.

The use of small cylindrical end rollers or knife edges allows a gentle and accurate transport of even smallest items. Yet this belt bend can cope with loads up to 100 kg. The belt drive by chain secures a slip free acceleration even under maximum load.

The simple belt removal towards the centre is another feature of this model.

Areas of application

For safe and gentle conveying of goods in the food- and non-food industries, e.g.

- Chocolate, biscuits, confectionery
- Frozen food
- Paper- / printing industry
- Washing products / detergent industry
- Chemicals / pharmaceuticals / cosmetics
- Mechanical industry

Technical data

Belt speed	Up to 80 m/min on outer radius
Belt load	Up to 100 kg
Noise level	Depending on dimensions and speed

Performance data may vary, depending on application

Standard-Specifications

Belt drive

Belt is pulled or pushed via loops by lateral curved chain. The motor, which is located at the outer radius of the bend, drives the shaft of the belt carrier chain by means of a drive chain. This guarantees a slippage-free belt drive in both running directions.

The position of the drive unit can be chosen.

Conveyor belt

- Belt quality according to customer needs
- Endless welded
- Compatible with foodstuffs (FDA / HACCP)

End rollers

Cylindrical end rollers \varnothing 14 mm (Standard)

Supports

With supports for floor mounting

- Fixed (adjustable \pm 45 mm)
- Optionally without supports

Safety

- CE manufacturers declaration

Finish

- Mild steel, choice of RAL shades
- Stainless steel

Your benefits

- Favourable price-performance ratio:
 - The simple, modular design allows high flexibility with regard to customer-specific dimensions (angles, radius)
 - Minimum space requirements due to minimal frame height
 - Fast installation / commissioning
 - Low maintenance costs
- High productivity:
 - High availability due to sturdy design, proven in multishift operation
 - Slippage-free drive due to lateral curved chain and loops
 - Low maintenance requirement
- Safe and gentle handling of small, fragile products due to minimal belt transition points with \varnothing 14 mm end rollers
- Short delivery time

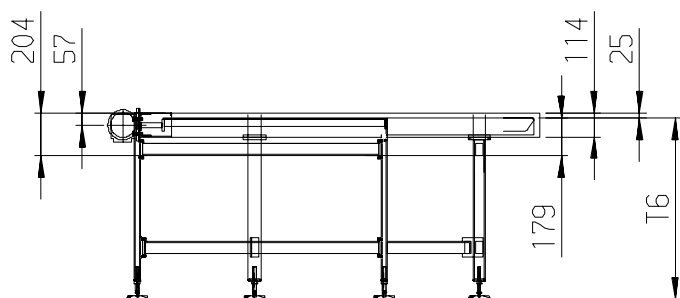
Mechanical options

- End rollers \varnothing 60 mm
- End rollers \varnothing 10 mm
- Knife edge, radius 3 mm
- Supports on castors
- Without supports
- Preparation for ceiling suspension
- Automatic chain lubrication
- Automatic chain tensioning
- Catch tray
- Conveyor connections
- Underneath guarding
- Side guides
- Trunking
- Further options on request

Electrical options

- Drive units according to customer requirements
- Frequency converter
- Disconnecter
- Further options on request

Dimensions (mm)



Inside radius Ri

- Minimum Ri, see table below
- For 180° up to BB 900 mm available without inside radius
- Maximum Ri 4000 mm depending on BB and angle
- For optimum operating conditions $Ri \geq \frac{1}{2} BB$

Useable belt width BB

- 200 up 1800 mm in steps of 50 mm
- 50 mm wider than the belt width of the adjoining components

Bend angle W°

- Any angle from 30° to 180°

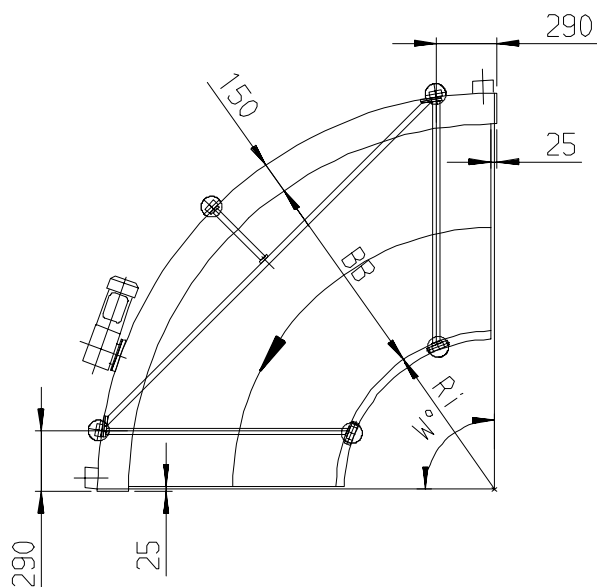
Conveyance height t6

- 400 to 1500 mm

Running direction

- Clockwise (U)
- Anti-clockwise (G)

Other dimensions on request



Minimum Inside Radius (Ri)

Angle	Belt Width BB								
	200	300	400	500	600	700	800	900	≥ 1000
30°	1320	1270	1120	1020	920	820	720	620	550
45°	760	660	560	460	380	380	380	380	380
60°	480	430	380	330	300	300	300	300	300
75°	325	250	250	250	250	250	250	250	250
90 – 180°	230	230	230	230	230	230	230	230	230